

About

The about screen will be unique to each profile. Generally, this provides creative credits and legal attribution.

These buttons allow you to add (and remove) custom keystroke assignments. Use them to assign media clips to a specific key or key combination.

Use this to create application-specific media clip assignments. For instance, if you have a single application to which you would like to have unique sound assignment that differ from all other application sounds, you would use this feature. Clicking "Add" will allow you to browse to select the desired application. Once it is added, it will show up in the drop down application list. Notice that the events in the drop down event list now display events that are applicable only to a specific application, omitting for example, the Start Windows or Shutdown events which would be global.

This window only displays clips which have been assigned to a specific event. To assign additional clips to the event, drag them over from the left hand file view column. To delete a clip, select it in the right hand assignment column by clicking it, then press the delete key.

This window displays available media clips, in much the same manner as the Browser. You may audition clips by double clicking them, and any desired clip can instantly be assigned by dragging it over to the right hand event window.

Browser

The browser appears very similar to the standard Windows file management tools like Explorer, and operates similarly. On the left column you may select drives, directories or files. Personal Desktop only displays file types that it recognizes, so other file types will be "filtered" out of the view to avoid clutter and confusion. If you see a file you're interested in auditioning, double click it. Click again to end the preview. If you want to install that file onto the hard drive, just drag it over to the right column. Personal Desktop will automatically determine the file type and put it in the appropriate media directory.

Contents

[Installing the Lost In Space Arcade Entertainment Utility](#)
[Uninstalling the Lost In Space Arcade Entertainment Utility](#)
[Personal Desktop Deluxe](#)
[Lost In Space Arcade Game](#)
[Tech Support](#)
[Legal](#)

Cursors

This tab allows you to easily assign customized cursors. Locate the appropriate cursor directory in the left hand file column. You can easily view the cursors by clicking them. To assign, just drag the desired cursor to the right hand column, over the cursor you want to replace.

Remember - if you get carried away, you can always revert back to the default cursors by clicking an assignment (in the right hand column) and pressing the delete key!

The default for Enable is checked. This function is used to selectively disable or enable specific Windows events that you want media clips attached to. An audio assignment for any event which is not enabled will not be active.

This drop down list displays the Windows events to which media clips may be assigned. Each individual event can have it's own unique assignments.

Game Play

Your space pod can move up, down, left and right. You control it using the arrow keys. Pressing the space bar fires your guns. If you hold down the spacebar, your ship's guns will go into continuous fire mode. Your shield strength is represented by the blue energy bar at the top of the screen. The Jupiter 2's hull integrity is shown by the green one directly under it. The space pod can take only a few hits before it comes apart, but your shields can take quite a beating. They'll regenerate if you manage to evade enemy fire long enough. We wouldn't advise spending too much time ducking fire - if you're doing that, chances are good that the Jupiter 2 is taking your lumps for you, and in this battle simulation its shields *don't* regenerate like yours do.

You can earn new space pods by destroying alien spacecraft. If you do well enough, the main computer will reward you with better guns and stronger shields. This will help you considerably, and you'll need it – the aliens get tougher and more numerous the longer you play.

Graphics Modes

Lost In Space requires a graphics mode having 256 colors. You may have to temporarily change your graphics mode to play. If you are running Windows 95 at a greater graphics resolution than 640x480, pressing the 'F' key will toggle full screen mode on and off. When full screen mode is off, **Lost In Space** will run in a window just like any other Windows 95 application.

The Boss Key

Pressing the 'B' key will minimize the game. Just click on the minimized game on your tool bar to restore it. While minimized, the game will pause and wait for you to come back to it.

Hardware Requirements

Lost In Space will run on as little as a 486DX/66 with 8M RAM, running Microsoft Windows 95 or greater. The game runs best at a screen resolution of 640x480, but will run at higher resolutions if you need it to do so. A Soundblaster-compatible audio card is recommended for best game play but is not essential. Control is exclusively via arrow keys and space bar on the keyboard. Installation requires approximately 4 megabytes of space on your hard disk. The game cannot be run from floppies.

Icons

This part of Personal Desktop deluxe allows you to easily assign custom icons to your normal desktop icons. Clicking on any icon file will display the icon at the bottom of the screen. To assign an icon, just drag it from the left hand column over to the desired icon on the right. The change should take effect immediately. To return an icon to it's default assignment, click the icon on the right hand column and press the delete key.

Although this is the only way to assign icons from within Personal Desktop Deluxe, you can substitute custom icons for other application icons also:

1. Right click an application and select Properties.
2. In the application properties window, you should see a Program tab. Select it.
3. At the bottom of the window, select the Change Icon button.
4. Initially you will probably see Windows default icons.
5. In the "Change Icon window, the icon will be displayed. Make sure it's selected and click OK.
6. Close the Application Properties window - it should now display the new icon

Installing the Lost In Space Arcade Entertainment Utility

The Lost In Space Arcade Entertainment Utility will allow you to customize your PC with customized icons, cursors, desktop wallpaper, audioclips and screensaver - all based on your favorite movies!

After running the INSTALL.EXE, you will be given a choice of installations:

Default - installs a broad selection of each of the file type, but does not install everything. Remember - the CD contains a lot of information and depending on the amount of hard drive space you have, you may want to install or change files later. Personal Desktop Deluxe provides a browsing and file management tool to make this very easy.

Minimal - installs only a few of each of the file types in order to conserve hard drive space.

Custom - allows the installation of all files by category. From here you can install *everything* if you have sufficient hard drive space

Unless you choose the custom install and select all categories, only a limited selection of images and sounds will be installed initially, and the CD contains many more sounds and screen saver images which can be installed any time you desire.

The CD-ROM is used as a storage medium only, and is not needed for the actual operation of the sounds or screen saver images.

Introduction

Space can be a dangerous place, especially if you're not sure where home is. As a member of the crew of the Jupiter 2, you need to be in a constant state of readiness to defend your vessel against the threat of alien attack. In an emergency, the Jupiter 2's space pod can be fitted with pulse lasers and other weapons. To help you stay sharp, Alpha Control made sure this combat simulator was loaded into the Jupiter 2's main computer before it left for the stars. Good luck – you'll need it.

Legal

Software License Agreement:

Sound Source Interactive (hereinafter referred to as SSI) warrants the diskettes and/or compact disc on which the Software and fonts are recorded to be free from defects in materials and workmanship under normal use for a period of ninety (90) days from the date of purchase as evidenced by copy of the receipt. SSI's entire liability and your exclusive remedy will be replacement of the diskettes and/or compact disc not meeting SSI's limited warranty and which is returned to SSI or an SSI authorized representative with a copy of the receipt. SSI will have no responsibility to replace a disk/disc damaged by accident, abuse or misapplication. ANY IMPLIED WARRANTIES ON THE DISKETTES AND/OR COMPACT DISC, INCLUDING THE IMPLIED WARRANTIES OF MERCHANTABILITY AND FITNESS FOR A PARTICULAR PURPOSE, ARE LIMITED IN DURATION TO NINETY (90) DAYS FROM THE DATE OF DELIVERY. THIS WARRANTY GIVES YOU SPECIFIC LEGAL RIGHTS, AND YOU MAY ALSO HAVE OTHER RIGHTS WHICH VARY BY JURISDICTION.

Disclaimer of Warranty on Software:

You, the purchaser of this software (end-user), expressly acknowledge and agree that use of the Software and fonts is at your sole risk. The Software, related documentation and fonts are provided "AS IS" and without warranty of any kind and SSI and SSI's licensor(s) (for the purposes of provisions shall be collectively referred to as SSI.) EXPRESSLY DISCLAIM ALL WARRANTIES, EXPRESSED OR IMPLIED, INCLUDING, BUT NOT LIMITED TO, THE IMPLIED WARRANTIES OF MERCHANTABILITY AND FITNESS FOR A PARTICULAR PURPOSE. SSI DOES NOT WARRANT THAT THE FUNCTIONS CONTAINED IN THE SOFTWARE WILL MEET YOUR REQUIREMENTS, OR THAT THE OPERATION OF THE SOFTWARE WILL BE UNINTERRUPTED OR ERROR-FREE, OR THAT DEFECTS IN THE SOFTWARE AND THE FONTS WILL BE CORRECTED. FURTHERMORE, SSI DOES NOT WARRANT OR MAKE ANY REPRESENTATIONS REGARDING THE USE OR THE RESULTS OF THE USE OF THE SOFTWARE AND FONTS OR RELATED DOCUMENTATION IN TERMS OF THEIR CORRECTNESS, ACCURACY, RELIABILITY OR OTHERWISE. NO ORAL OR WRITTEN INFORMATION OR ADVICE GIVEN BY SSI OR AN SSI AUTHORIZED REPRESENTATIVE SHALL CREATE A WARRANTY OR IN ANY WAY INCREASE THE SCOPE OF THIS WARRANTY. SHOULD THE SOFTWARE PROVE DEFECTIVE, YOU (AND NOT SSI OR A SSI AUTHORIZED REPRESENTATIVE) ASSUME THE ENTIRE COST OF ALL NECESSARY SERVICING, REPAIR OR CORRECTION.. SOME JURISDICTIONS DO NOT ALLOW THE EXCLUSION OF IMPLIED WARRANTIES, SO THE ABOVE EXCLUSION MAY NOT APPLY TO YOU.

Limitation of Liability:

UNDER NO CIRCUMSTANCES INCLUDING NEGLIGENCE, SHALL SSI BE LIABLE FOR ANY INCIDENTAL, SPECIAL OR CONSEQUENTIAL DAMAGES THAT RESULT FROM THE USE OR INABILITY TO USE THE SOFTWARE OR RELATED DOCUMENTATION, EVEN IF SSI OR AN SSI AUTHORIZED REPRESENTATIVE HAS BEEN ADVISED OF THE POSSIBILITY OF SUCH DAMAGES. SOME JURISDICTIONS DO NOT ALLOW THE LIMITATION OR EXCLUSION OF LIABILITY FOR INCIDENTAL OR CONSEQUENTIAL DAMAGES SO THE ABOVE LIMITATION OR EXCLUSION MAY NOT APPLY TO YOU.

In event shall SSI's total liability to you for all damages, losses, and causes of action (whether in contract, tort (including negligence) or otherwise) exceed the amount paid by you for the Software and fonts.

If you have the correct CD-ROM in the drive, you can click this button to view files and directories on the CD immediately. "Dragging and Dropping" media clips from the left hand CD view column to the right hand sound list will physically copy the files from the CD to the appropriate HD directory, and assign them to the currently listed event. This simplifies file management and prevents you from assigning sounds on a CD that might not be present later, when the media clip is activated.

LOST IN SPACE: Cosmic Alien Menace Preparation Program (C.A.M.P.P.)

[Introduction](#)

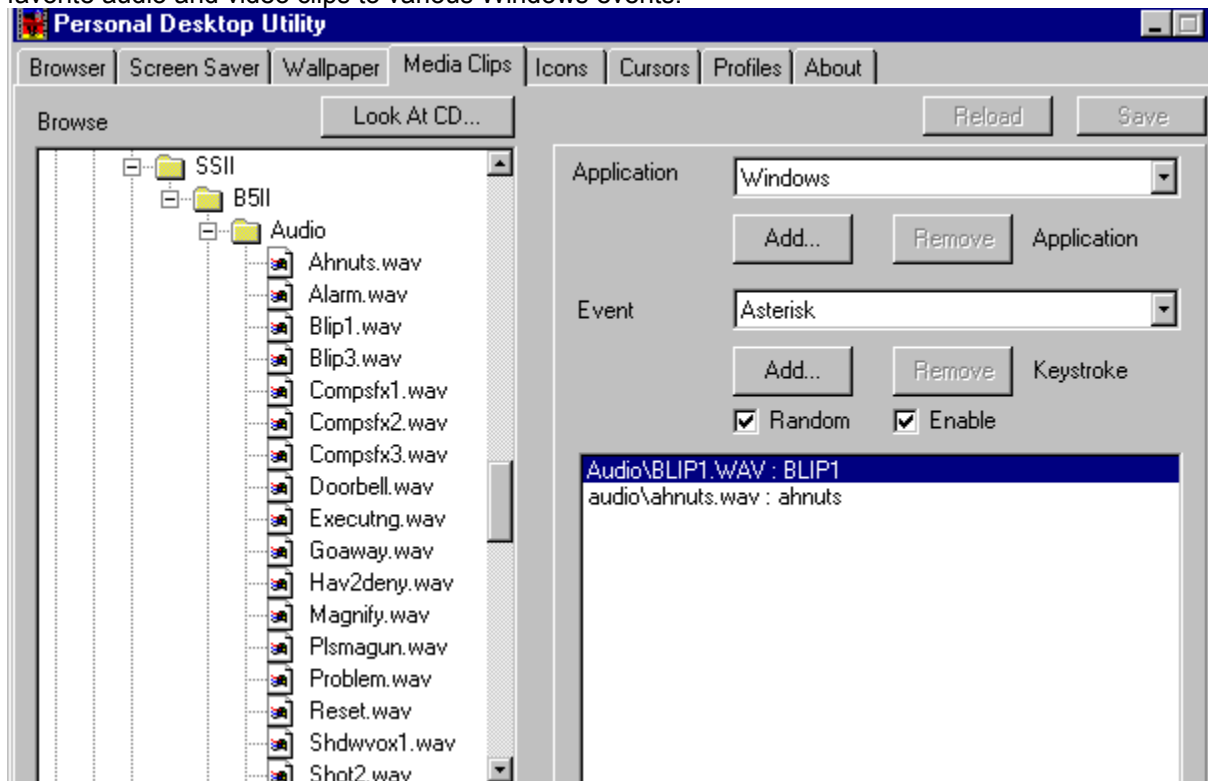
[Game Play](#)

[Graphics Modes](#)

[Hardware Requirements](#)

Media Clips

Media Clips are a powerful and fun feature of Personal Desktop. This function allows you to "attach" your favorite audio and video clips to various Windows events.



To assign or configure mediaclips

1. On the bottom right hand side of the screen click the Personal Desktop icon.
2. Click the Media Clips tab at the top of the Personal Desktop window.
3. In the browse window double click your **C:** drive icon (your hard drive), then double click the Program Files folder.
4. Open the **SSII**, **LIS** and **Audio** sub-folders by double clicking on them.
5. The files listed under the **Audio** folder are where the sound files are located.
6. The first thing is to choose a event by clicking on the Event windows arrow, than Drag the file you like over to the windows on the bottom right hand side of Personal Desktop.

To minimize Personal Desktop, click on the icon at the bottom right hand side of the screen.

Media directories

Personal Desktop Deluxe uses five separate directories for media storage:

Audio - for .WAV audioclip files

Cursor - for custom cursors

Icons - for custom icons

Saver - for video and image screensaver files

Wallpaper - for bmp files displayed on the desktop background.

If you use the browser within Personal Desktop Deluxe to transfer files from the CD-ROM to your hard drive, files will be copied automatically to the appropriate directory.

Personal Desktop Deluxe

Personal Desktop Deluxe is a "Desktop Customization" utility designed to make it easy and fun to personalize your computer. It allows you to add and configure customized sounds, images, cursors, icons and screensavers. It's powerful yet easy to use.

Personal Desktop Deluxe consists of a series of tabbed pages, each corresponding to a specific function.

[Browser](#)

[Screen Saver](#)

[Wallpaper](#)

[Media Clips](#)

[Icons](#)

[Cursors](#)

[Profiles](#)

[About](#)

Profiles

Profiles work similarly to Microsoft Desktop Themes. You may save or create new profiles if you like, and change them instantly by selecting a new Profile from the drop down list in the profiles tab. If you purchase additional Entertainment Utilities with Personal Desktop Deluxe, each will install a new profile. If you have older versions of Personal Desktop, you may create new custom Profiles using your earlier media clips, wallpaper and screensavers. (Personal Desktop is backwards compatible with the old files, but it will not read your old Personal Desktop configuration.)

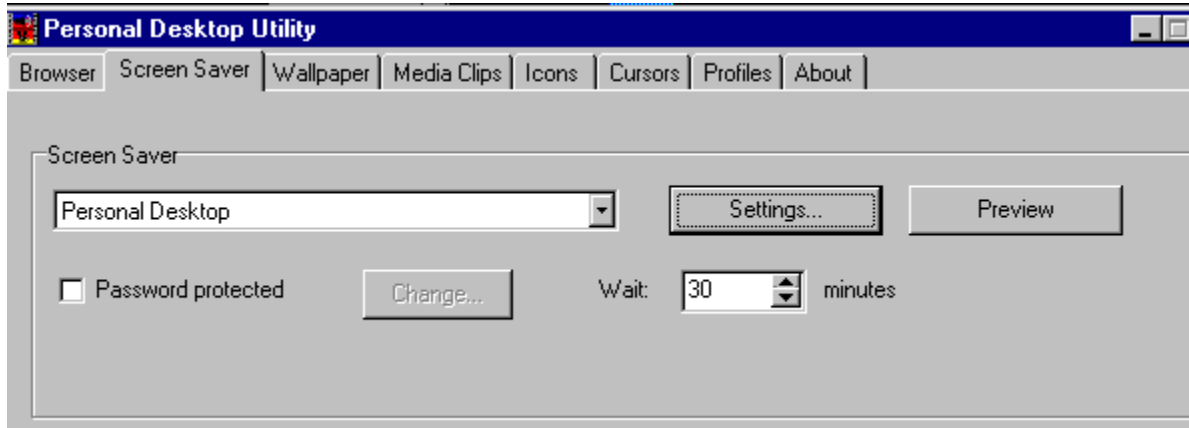
This button sets the media clips to play back in random order. If this button is not set, media clips will iterate sequentially through the list as they are triggered by successive events. In no case is more than one clip per event triggered.

This button reloads previous settings

This button allows you to save your current Media Clip settings, if you have made changes that you want to keep.

Screen Saver

The Screen Saver tab allows you to select any Windows screen saver. Select "Personal Desktop" in the screensaver list to activate the Personal Desktop screensaver.



This allows a user to set a password which must then be entered to quit a screen saver. The computer will prompt you for the password if you try to exit the screen saver. If an incorrect password (or no password) is entered, the screen saver will resume operation, disallowing access to the Windows Desktop. This provides security and privacy for your computer when you are away from it.

The **Change** button allows you to change your password.

Passwords are global, so whatever password you set for any .SCR file becomes the password for all .SCR files with the Password Protected option box checked.

Screensaver Settings

Sound Options

Sounds are a lot of fun, and really enhance the impact of a screen saver, but they can sometimes become intrusive.

The "Full Sound" option gives you all sounds continuously, throughout the operation of the screen saver.

The "Limited Sound" option plays the sounds for a couple of iterations (a minute or two) for the screen saver, then goes silent for the rest of the duration.

The "No Sound" option mutes the screen saver entirely.

Display Options

1. Delay

This sets the length of time each still image is displayed on the screen.

2. Transition

This option selects one of the several transition effects between images. Choices include Random, Block Fade, Horizontal Blind, Vertical Blind, Horizontal Wipe, Vertical Wipe, Circular Wipe and Pixel Fade. The Random selection will cycle a different "fade style" for each image.

Use the up/down arrows to scroll to desired setting (in minutes) or type in a number. This sets the amount of "inactivity" time that must go by without a keyboard event before the screensaver starts.

Clicking the right hand arrow will display a drop down list of all available screensavers. Select "Personal Desktop", or any of your other Windows Screensavers.

Click this button to preview selected screensavers. Pressing any key or moving the mouse will cancel the screensaver preview and return to the desktop.

Tech Support

For phone tech support, call **(818) 878-0505** from 7:30AM to 6:00PM, PST.
Please try to situate yourself by the computer before calling - it will speed things up considerably!

For email tech support - **SSI Online@aol.com**

Webpage address - **<http://www.soundsourceinteractive.com>**

Uninstalling the Lost In Space Arcade Entertainment Utility

IMPORTANT NOTE: Make sure you exit Personal Desktop before running the uninstall!

Windows 95: Click on Start, Settings, Control Panel, Add-Remove Programs, and select "Lost In Space Arcade Entertainment Utility" to uninstall.

Please note! If you have added additional media files to your Personal Desktop Media directories, the directories and additional files will be left intact in an uninstall, and will have to be deleted by the user. This is a safeguard to prevent the user from accidentally deleting personal media files from other sources which may have been placed in the Personal Desktop directories.

Wallpaper

The wallpaper tab functions similarly to the browser. Files in the left column can be double clicked to audition, and dragged from the left column to the right to place them in the wallpaper queue. Once files are dragged to the right column, you can right-click them to set display characteristics, including **stretched**, **centered**, **tiled**, **tiled and stretched**, and **make current wallpaper**.

